



Automated GUI Testing

Functional GUI testing is an essential part of the development and QA processes of sophisticated modern GUI applications. Automated GUI tests quickly produce reliable and reproducible results. Automated GUI testing enables test engineers to rapidly find regressions so that fixes can be done early, saving both time and money.



Squish

GUI Test Automation

Squish by froglogic is built upon a deep knowledge of the underlying GUI technologies it is being used to test. It supports automating tests for all kinds of modern GUI applications:



Squish for
Qt



Squish for
Java



Squish for
Windows



Squish for
Mac



Squish for
Mobile



Squish for
Web

and more...

Additional features:

- Powerful and easy to use test development environment
- Record and replay with powerful scripting capabilities
- Fully integrated support for Behavior Driven Development and Gherkin
- Choice of non-proprietary scripting language
- Access to all the tested application's objects
- Interactive Object Spy
- Command line toolset for unattended test automation
- Open data formats (e.g., plain text configuration files and plain text and XML/HTML reports)
- Support for hybrid applications (Qt+Web, Qt+ActiveX and others)
- Source code availability

Learn More and Get in Touch

www.froglogic.com/squish
squish@froglogic.com





Squish for Qt



Squish for Java



Squish for Windows



Squish for Mac

iOS

Squish for iOS



Squish for Android



Squish for Web

GUI Toolkits

- Qt 3.x
- Qt 4.x
- Qt 5.x
- Qt Quick

- Swing
- AWT
- SWT
- Eclipse/RCP
- JavaFX

- MFC
- .NET Windows Forms
- .NET WPF
- PowerBuilder
- FoxPro
- Infragistics
- Telerik
- Exontrol
- Microsoft Accessibility
- Visual Basic 6

- Cocoa
- Carbon

- CocoaTouch

- Android UI

- HTML5
- Internet Explorer
- Firefox
- Mozilla
- Safari
- Chrome
- Edge
- CEF

GUI Controls

- Standard controls
- Complex views
- QGraphicsView
- QtWebKit
- QML
- QtWebEngine
- Qt Quick Controls

- Standard controls
- Complex views
- GEF
- Embedded Web Browser

- Standard controls
- Complex views
- Embedded Web Browser
- Excel
- Microsoft Ribbon

- Standard controls
- Complex views
- WebKit

- Standard controls
- Complex views
- Chooser
- Date picker
- Time picker
- Gestures
- WebKit

- Standard controls
- Complex views
- Spinner
- Date picker
- Time picker
- Gestures
- WebKit

- Standard HTML form controls
- Web Toolkits
- Java applets
- ActiveX/native controls
- Flex

Custom Controls

YES

YES

YES

YES

YES

YES

YES

Supported Platforms

- Windows
- Linux/Unix
- macOS
- Embedded Linux
- QNX
- VxWorks
- Windows CE
- Android

- Windows
- Linux/Unix
- macOS
- Embedded Linux

- Windows 2000
- Windows XP
- Windows Vista
- Windows 7
- Windows Mobile
- Windows 8
- Windows 10

- macOS on
- PPC
- Intel

- iOS 3.0 - current
- iOS Simulator
- iPhone
- iPad
- iPod Touch

- Android 2.2 - current
- Android Emulator
- Android phones
- Android tablets

- Windows
- Linux/Unix
- macOS
- Embedded Linux
- iOS
- Android

Script access

- All classes
- All methods
- All properties

- All classes
- All methods
- All properties

- All classes
- All methods
- All properties

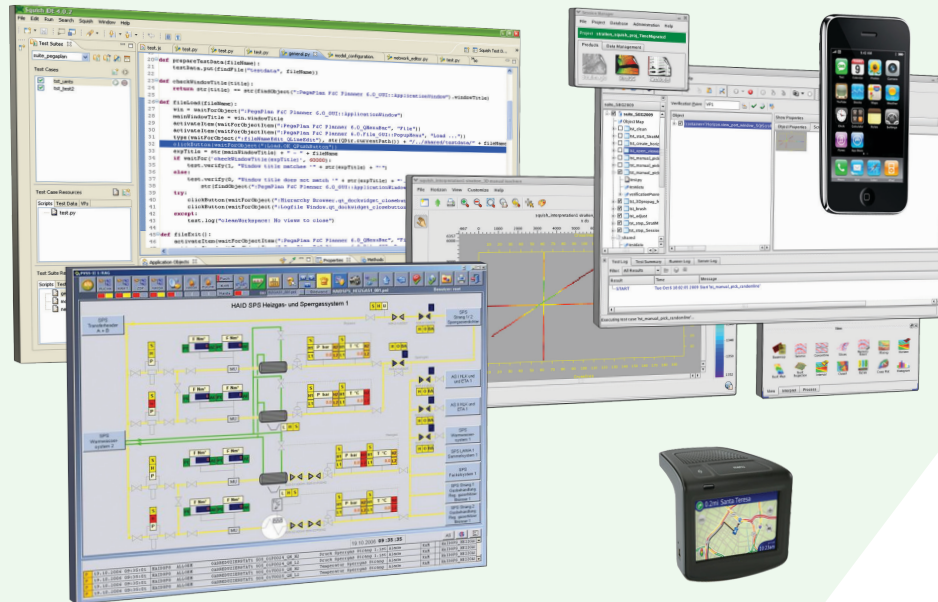
- All classes
- All methods
- All properties

- All classes
- All methods
- All properties

- All classes
- All methods
- All properties

- All classes
- All methods
- All properties

Squish – Cross-Platform and Cross-Technology GUI Test Automation



Automated GUI Testing

Functional GUI testing is an essential part of the development and QA processes of sophisticated modern GUI applications. Automated GUI tests quickly produce reliable and reproducible results. Automated GUI testing enables test engineers to rapidly find regressions so that fixes can be done early, saving both time and money.



Squish GUI Test Automation

Squish by froglogic is built upon a deep knowledge of the underlying GUI technologies it is being used to test. It supports automating tests for all kinds of modern GUI applications:



Squish for Qt



Squish for Java



Squish for Windows



Squish for Mac



Squish for Mobile



Squish for Web

and more...

Our Clients



Many leading Automotive, Medical, Avionics, Transportation, Industrial, Consumer Device, Household Appliance, and Home Automation companies use Squish Testing Suite to automate the testing of their embedded HMI's and connected devices.

Licensing

Named User Licenses and Group Licenses with concurrent seats are available. All licenses are perpetual and include a free 12-month Support & Updates Subscription.

Additional features:

- Powerful and easy to use test development environment
- Record and replay with powerful scripting capabilities
- Fully integrated support for Behavior Driven Development and Gherkin
- Choice of non-proprietary scripting language
- Access to all the tested application's objects
- Interactive Object Spy
- Command line toolset for unattended test automation
- Open data formats (e.g., plain text configuration files and plain text and XML/HTML reports)
- Support for hybrid applications (Qt+Web, Qt+ActiveX and others)
- Source code availability

Learn more and get in Touch

www.froglogic.com/squish
squish@froglogic.com

